



IMKO

P R E M I E R

PREMIER HOUSE

C H E R T S E Y



Perfect Surroundings

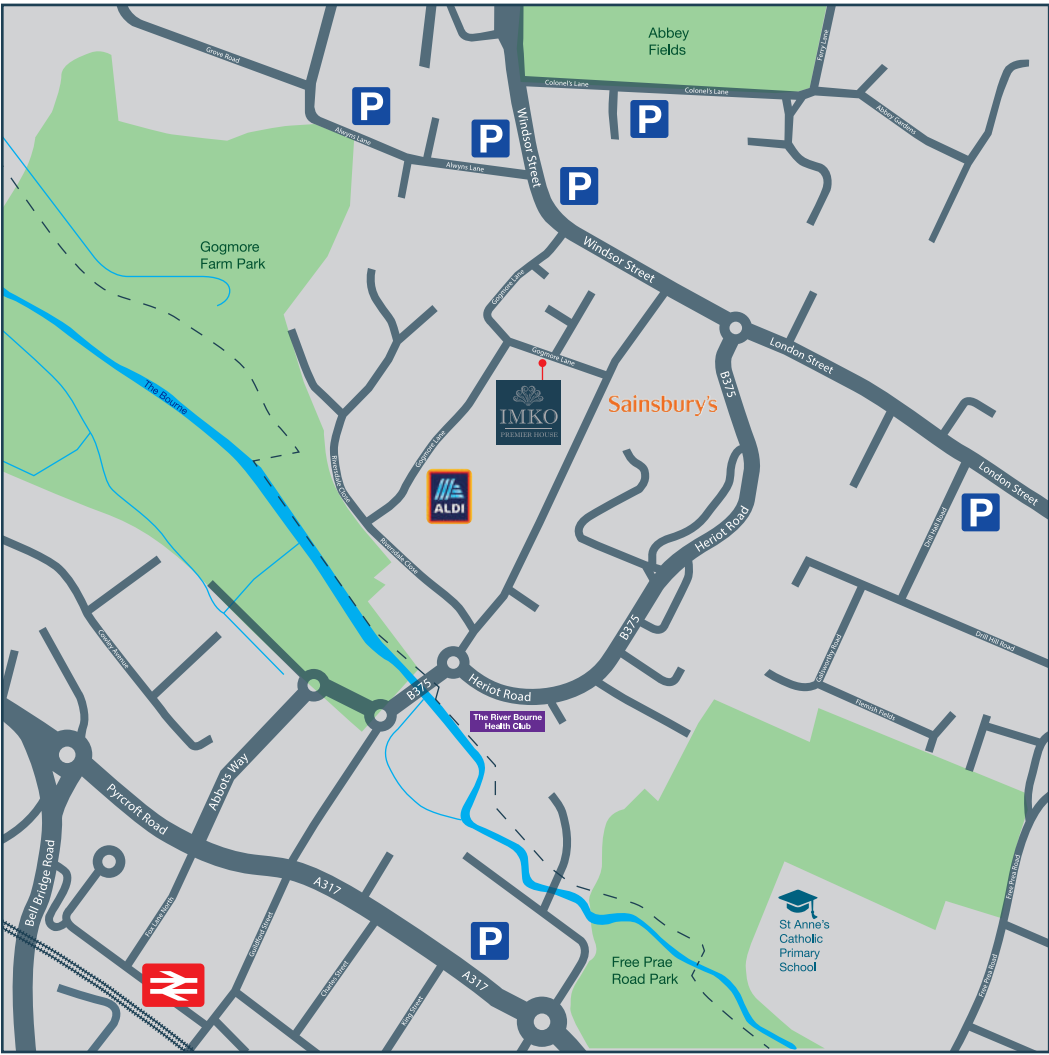
Occupying an enviable position on the banks of the river Thames, the historic town of Chertsey is in the Surrey commuter belt. It is perfectly located for those seeking good transport links, with both the M25 and M3 just a mile away, opening up access to London, the south-east and beyond. From Chertsey train station you can be at Waterloo in 52 minutes. This is great for the commuter, but what sets Chertsey apart is that it retains the character of a quintessentially English country town.

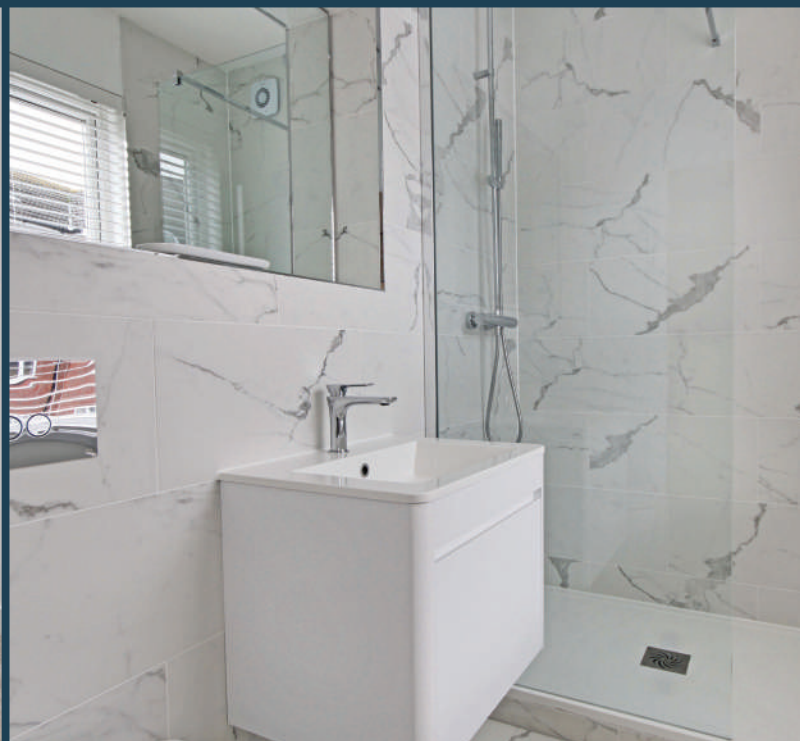
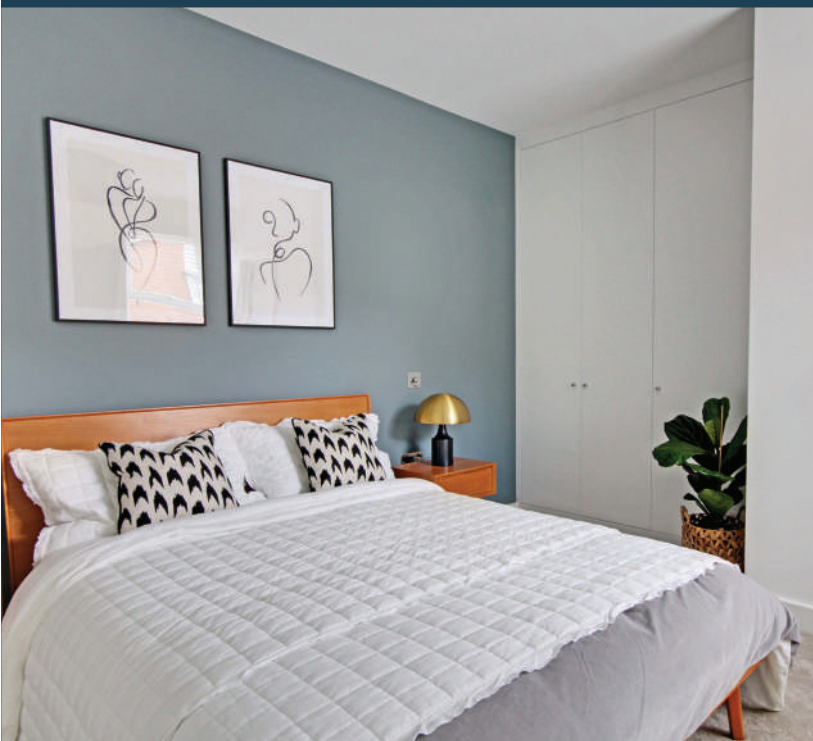
The town has a leafy feel, with plenty of open spaces to enjoy. Chertsey Meadows is 71 hectares of wild flower meadow, with riverside rambles to enjoy, a children's play area and plenty of scope for relaxing with a picnic as the Thames slips by. Boat hire is also available all year round, Chertsey Abbey and

Gogmore Farm Park are also on your doorstep, providing more opportunities to get out in nature at the weekends. Fishing, cycling and golf are all locally available and a great way to unwind after a busy week in the office. For the ultimate day out, head to nearby Thorpe Park for some adrenaline-fuelled rides!

Chertsey has some charming and characterful old buildings, and indeed some of the pretty town centre is protected as a conservation area. There are a good selection of shops, from independent retailers, to boutiques and major supermarkets. For an evening out there attractive restaurants and bars to the north of the High Street, or head to one of the historic pubs such as Thyme at the Tavern or The Kingfisher.

Convenient Location





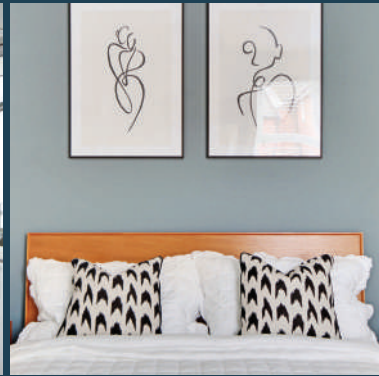
Welcome to Premier House

The exclusive new development, Premier House, brings Central London elegance and stylish living to the heart of Chertsey.

This prestigious development of 9 one and two bedroom apartments are designed to perfection and are located a stone's throw from Chertsey high-street and train station.

Benefiting from a serviced lift from the ground to the second floor and secure bike storage, every convenience has been considered.

The developers portfolio of previous developments have showcased some new and innovative technology combined with a very high specification.



Specifications

Kitchen

- Contemporary two tone kitchen
- Handle free & push doors
- Bosch induction hob
- Under-mounted stainless steel sink
- Pull out tap
- Quality white stone worktop
- Under wall unit LED lights

Intergrated appliances

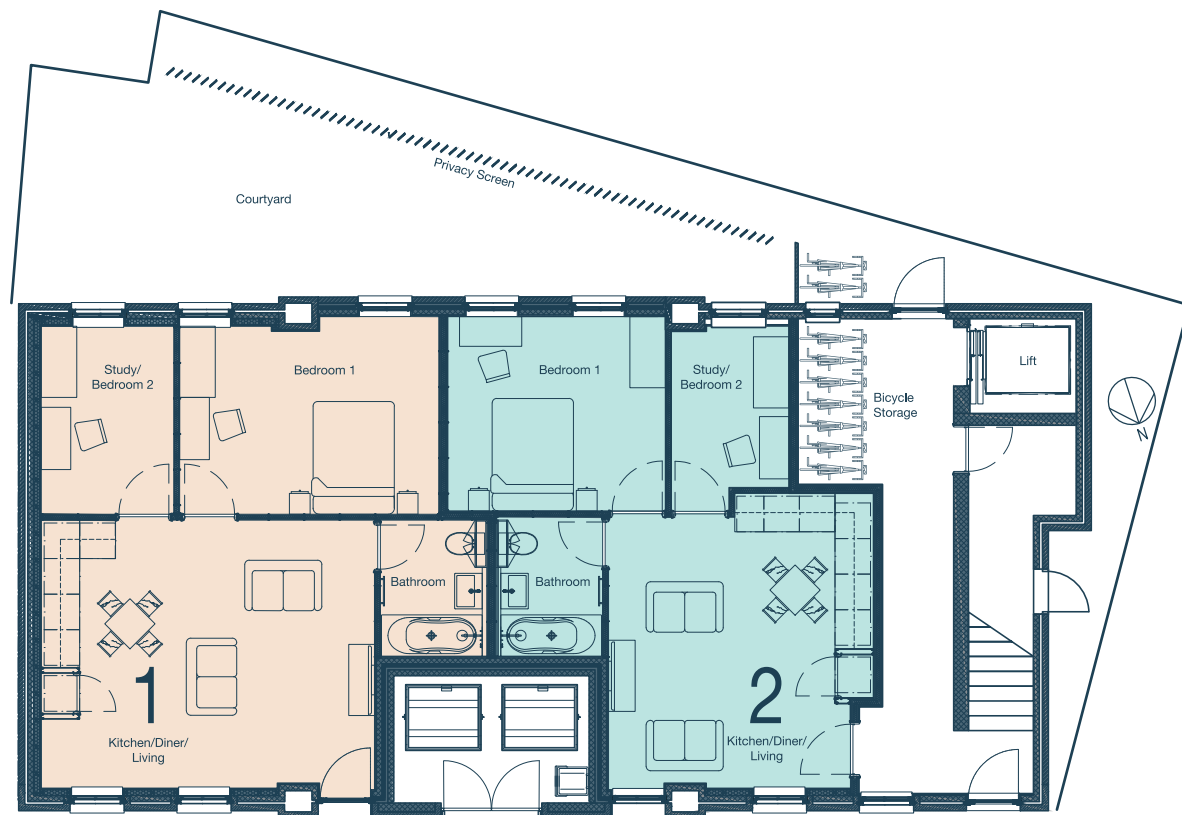
- Bosch Microwave oven
- Built in fridge freezer
- Built in dishwasher
- Built in washer dryer

Bathroom/Shower room

- Crosswater shower
- Marble effect tiles
- Wall hung WC
- Mirror recess light LED lighting
- Chrome heated towel rail
- Underfloor heating
- Shaver socket
- Quality vanity unit below basin
- Italian taps

Features

- Parquet timber flooring
- Underfloor heating with Heatmiser programmable controllers
- Quality built-in wardrobes
- Recessed mood lighting in ceilings
- Chrome sockets with USB charging points
- Luxury carpets
- TV points in both living room and bedrooms
- Integrated smoke alarm system
- BT and internet ready
- Bike storage
- Secure refuse and recycling area
- Video door entry system
- Lift from ground to second floor
- Sprinkler system to top floor
- 250 year leases and ground rent 0.1% of sale price



APARTMENT 1		2 BED
Kitchen / Diner / Living	5.5m x 4.5m	18'04" x 14'7"
Bedroom 1	4.4m x 3.2m	14'4" x 10'4"
Bedroom 2	2.2m x 3.1m	7'2" x 10'1"

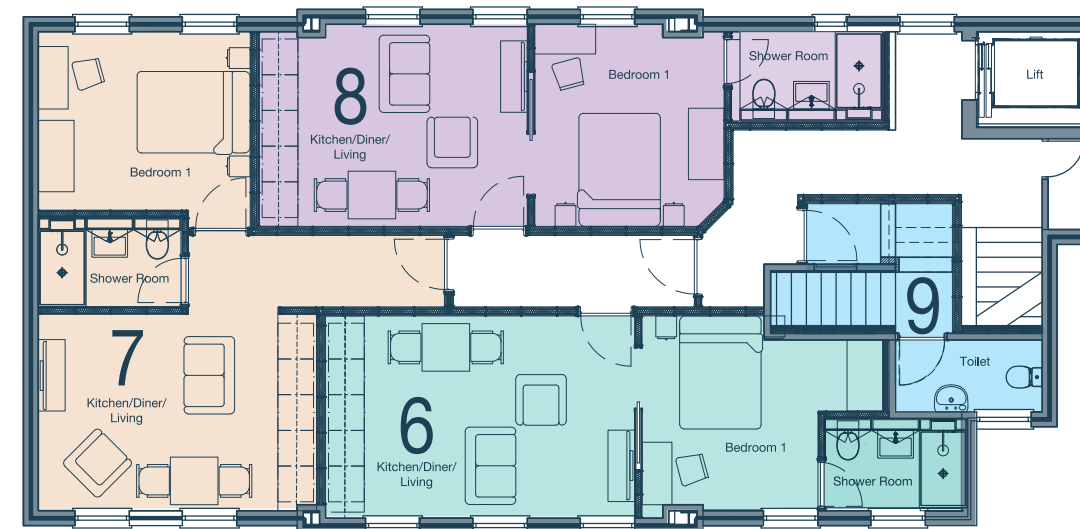
APARTMENT 2		2 BED
Kitchen / Diner / Living	4.3m x 4.8m	14'10" x 15'7"
Bedroom 1	3.6m x 3.2m	11'8" x 10'4"
Bedroom 2	1.9m x 3.1m	6'2" x 10'1"



APARTMENT 3		1 BED
Kitchen / Diner / Living	3.4m x 5.1m	11'2" x 16'9"
Bedroom 1	3.5m x 3.4m	11'6" x 11'2"

APARTMENT 4		1 BED
Kitchen / Diner / Living	4.6m x 4.8m	15'1" x 15'9"
Bedroom 1	3.2m x 3.5m	10'11" x 11'6"

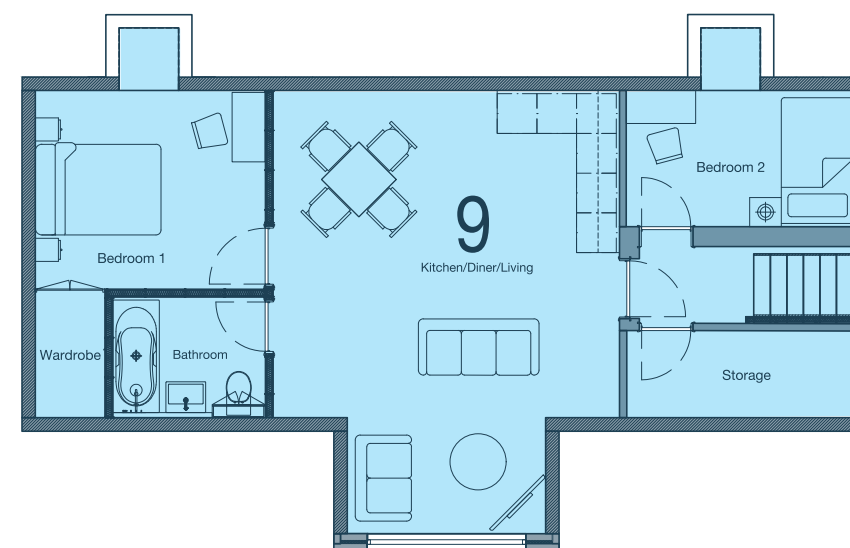
APARTMENT 5		1 BED
Kitchen / Diner / Living	4.9m x 3.3m	16'1" x 10'10"
Bedroom 1	3.3m x 3.4m	10'10" x 11'2"



APARTMENT 6		1 BED
Kitchen / Diner / Living	5.1m x 3.4m	16'9" x 11'2"
Bedroom 1	3.5m x 3.3m	11'6" x 10'10"

APARTMENT 7		1 BED
Kitchen / Diner / Living	4.6m x 4.8m	15'1" x 15'9"
Bedroom 1	3.6m x 3.3m	11'10" x 10'10"

APARTMENT 8		1 BED
Kitchen / Diner / Living	4.5m x 3.4m	14'10" x 11'2"
Bedroom 1	3.4m x 3.2m	11'2" x 10'11"



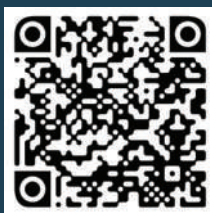
APARTMENT 9		2 BED
Kitchen / Diner / Living	6.5m x 4.3m	21'4" x 14'5"
Bedroom 1	3.8m x 2.9m	12'4" x 9'6"
Bedroom 2	4.0m x 2.4m	13'1" x 7'8"



Point your camera at this code to take a virtual tour of Flat 1

PLEASE NOTE that all information within this brochure is materially correct at the time of print. This brochure does not constitute any part of an offer or contract or constitute a warranty, so any interested purchasers, lessees or Third Parties should be aware that all elements are subject to change. Furthermore, all images and floor plans within the brochure are for indicative purposes only and may vary. All sizes are subject to some tolerance. Kitchen and bathroom layouts are indicative only. Please contact our Sales Team for apartment dimensions and layouts.

Point your camera at
this code to take a
virtual tour of Flat 1



www.imko.co.uk/chertsey
contact@imko.co.uk
Tel: 020 7584 2745